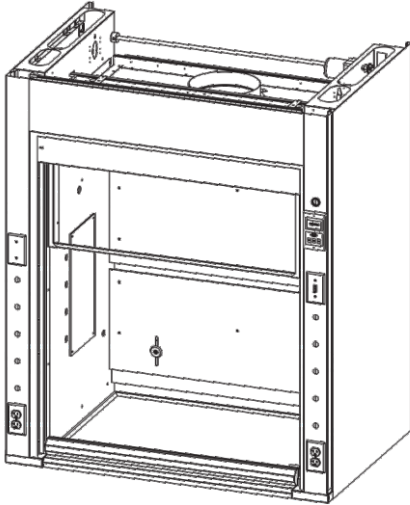
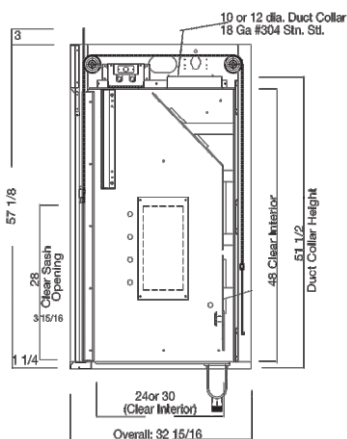


BASIC BENCH HOOD - FRAMELESS VERTICAL SASH



F-100 ISOLATOR GEN-5 Bench Hood Features:

- Unsurpassed containment (designed and tested to exceed ASHRAE 110-1995)
- Hood is UL1805/CUL Certified listed
- Unique chain driven sash mechanism with a lifetime warranty
- Painted steel pan superstructure 17.25" H. Clear observation glass panel, bypass system
- Vertical sashes provide the greatest hood interior accessranty
- Integral flush sill containment trough
- Ergonomic, painted sash handle and integral, painted, flush sill containment
- Full view frameless sash with 28" H. opening
- Quality engineering ensures years of reliable service



*Custom Hoods up to 12" available

Catalog Num.	Duct	28" Veritcal Open	18" Veritcal Open
F-100-36G5	1 : 10"	506 CFM @.14"SP	325 CFM @.06 "SP
F-100-48G5	1 : 10"	739 CFM @.29"SP	475 CFM @. 12"SP
F-100-60G5	1 : 12"	972 CFM @.27"SP	625 CFM @. 11"SP
F-100-72G5	1 : 12"	1206 CFM @.42"SP	775 CFM @. 17"SP
F-100-96G5	2 : 10"	1672 M@.37"SP	1075 CFM @. 5"SP

F-100 ISOLATOR GEN-5 Series Product Numbers

F-100-36G5	Bench 36"	Frameless	24" Deep, Clear Interior
F-100-36G5D30	Bench 36"	Frameless	30" Deep, Clear Interior
F-100-48G5	Bench 48"	Frameless	24" Deep, Clear Interior
F-100-48G5D30	Bench 48"	Frameless	30" Deep, Clear Interior
F-100-60G5	Bench 60"	Frameless	24" Deep, Clear Interior
F-100-60G5D30	Bench 60"	Frameless	30" Deep, Clear Interior
F-100-72G5	Bench 72"	Frameless	24" Deep, Clear Interior
F-100-72G5D30	Bench 72"	Frameless	30" Deep, Clear Interior
F-100-96G5	Bench 96"	Frameless	24" Deep, Clear Interior
F-100-96G5D30	Bench 96"	Frameless	30" Deep, Clear Interior

Sash Style Options:

- Combination Sash - CS
- Split Sash - SPS
- Horizontal Sash - HS
- Double-Sided Hoods -DS

Fume Hood Types

- Restricted Bypass - RB
- Auxiliary Air - AA